

Google Street View explained

Street View in Google Maps is simply a 360-degree eye-level view of the world, much like standing inside the map and looking around. It's a useful way to identify a building before you get there and to get accurate directions.

To get started you will need to begin with a Google map like this one of the university campus at Gilmorehill:

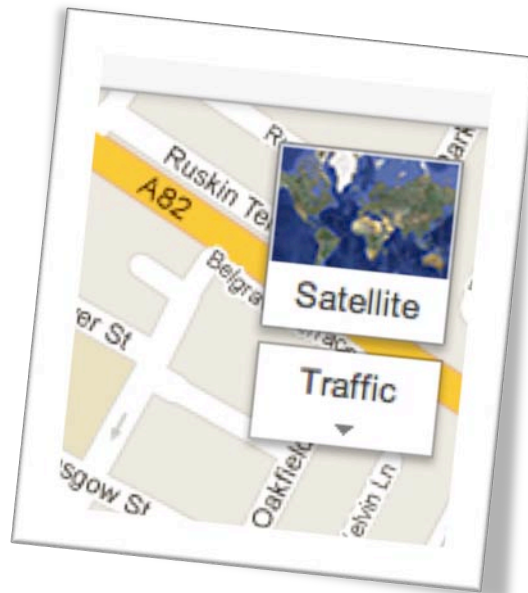
<http://g.co/maps/7qyzq>

A map for Garscube can be found here, although Street View is limited here:

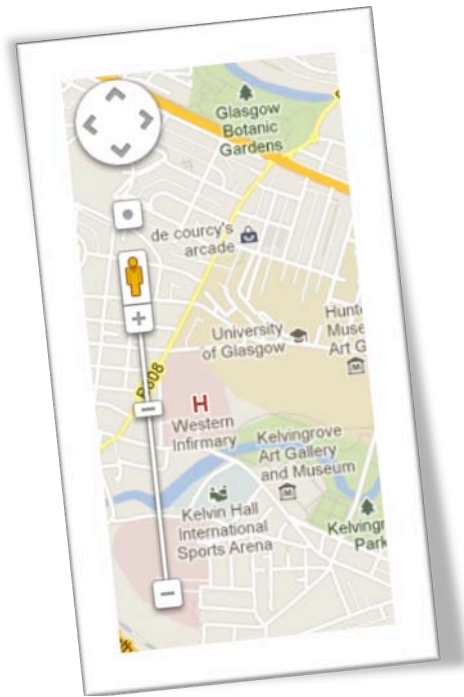
<http://g.co/maps/a7j3r>

A Dumfries campus map will be coming online soon according to Google, although Google Street View has yet to image the campus.

Select the 'satellite' view of the map as mentioned previously in Google Maps Explained document.



Next, let's view a location at street level. At the top left of the map you will see a directional icon and a slider with '+' and '-'. Above this is a little orange figure called pegman. Drag him over the map and you will notice streets glowing with a blue outline. These are the places where Street View is available. It covers most streets, but just recently we have added the internal campus paths.



Continue to drag pegman over a street/path until you find your place of interest. As you hover over this spot you will also see a green directional arrow showing which direction pegman is looking. It can be fiddly to achieve the right direction, so if you can't get it spot on just let pegman drop and you can adjust the direction later.

Once you release pegman, you are presented with the following:

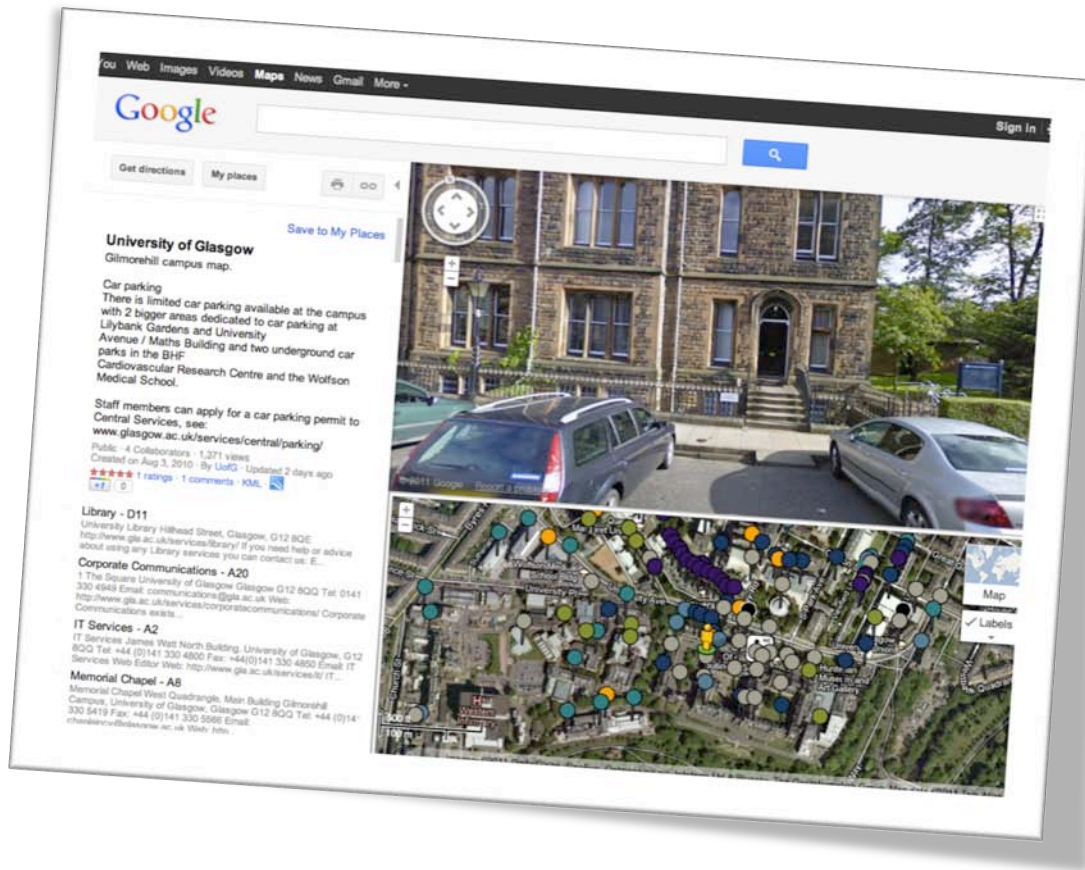


which is a Street View of the location. This is Corporate Communications at No. 1 The Square. If you click and drag (left to right or right to left) on the image you can turn through a complete 360 degrees, in increments. You can also use the direction control panel on the top left of the map, or use the left and right on your keyboard, to do the same.

If you see white chevrons hovering above the street image (see below) you can move forward or backward on the street, or you can use the up and down on the keyboard.



In the bottom right is a small detail of the map at the current location; clicking on the arrow in this corner allows that window to expand below the street view image, so you can see both views alongside each other. Clicking the arrow (now in opposite corner) will reduce it again.



You can exit from Street View by clicking on the 'X' at top right of the Street View image, and you will then be returned to the map view.