

Data Products of the Internal Displacement Monitoring Center (IDMC)

Empowering Migration Researchers: Data and Stakeholders



University of Glasgow
12 December 2024

Internally Displaced People:

“Persons who have been **forced to leave** their homes or places of habitual residence, and who have **not crossed** an internationally recognized State border.”

- *Guiding Principles on Internal Displacement, 1998*



Guiding Principles on Internal Displacement 1998



IDMC is established in Geneva as part of
the **Norwegian Refugee Council (NRC)**

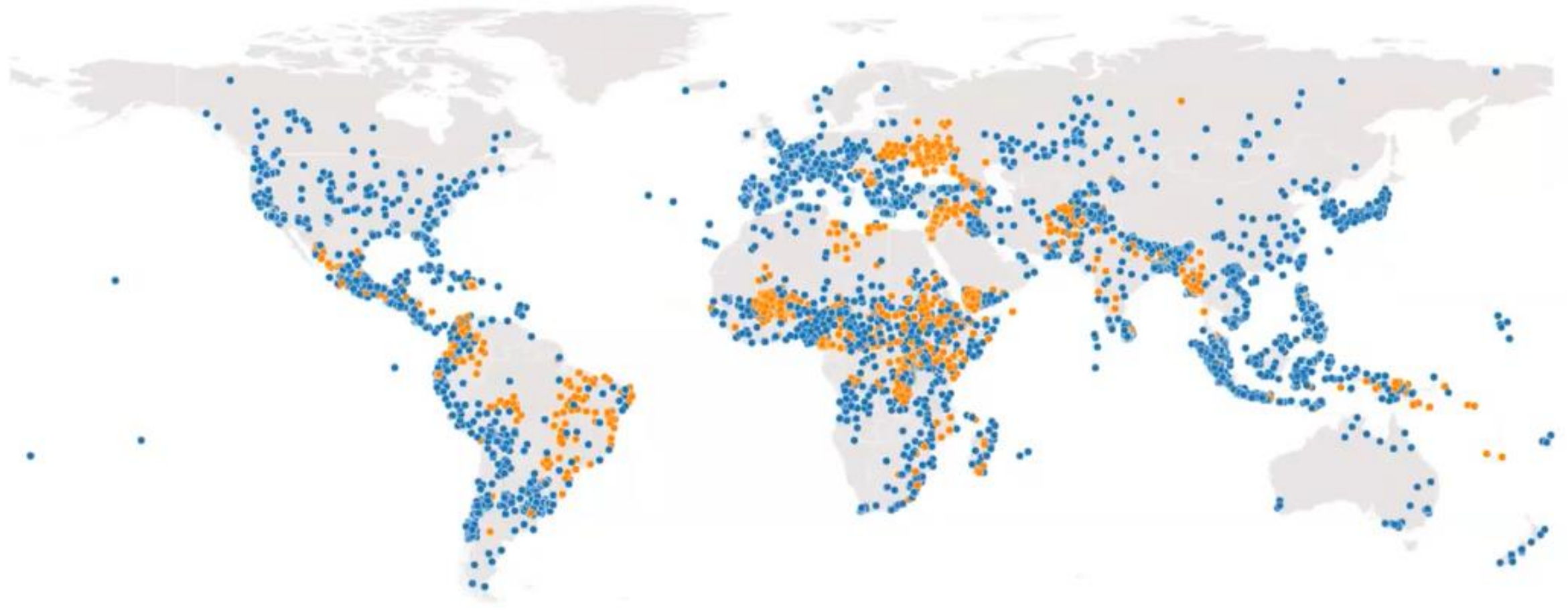
What do we do?

1. Global internal displacement estimates
2. Interdisciplinary research
3. Policy and capacity support



Global aggregator

of data on **internal displacement** triggered by **conflict** and **disasters** since 2008



How do we do it?



**Displacement
trigger**



**Data &
information**



**Monitoring
& data aggregation**

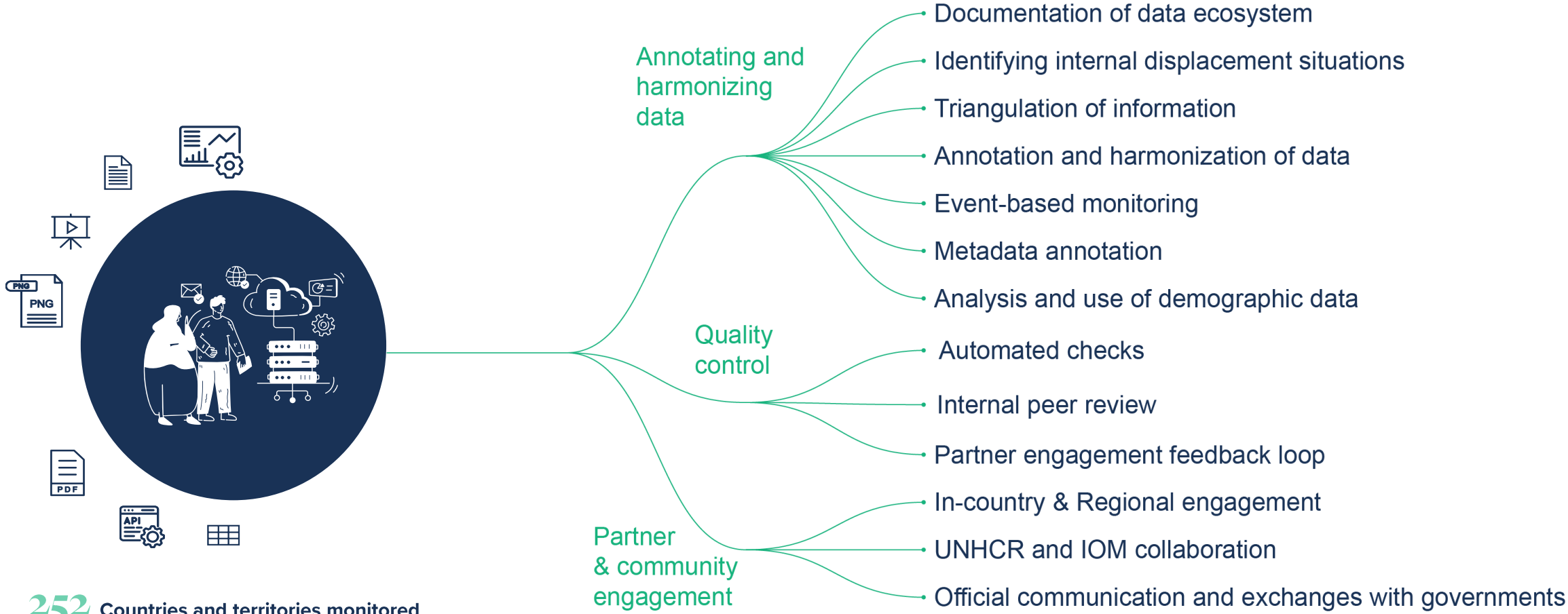


**Data sharing
& analysis**

Timely data
Internal
Displacement
Updates (IDU)

**Consolidated
estimates**
Global Internal
Displacement
Database (GIDD)

Monitoring & Data Aggregation

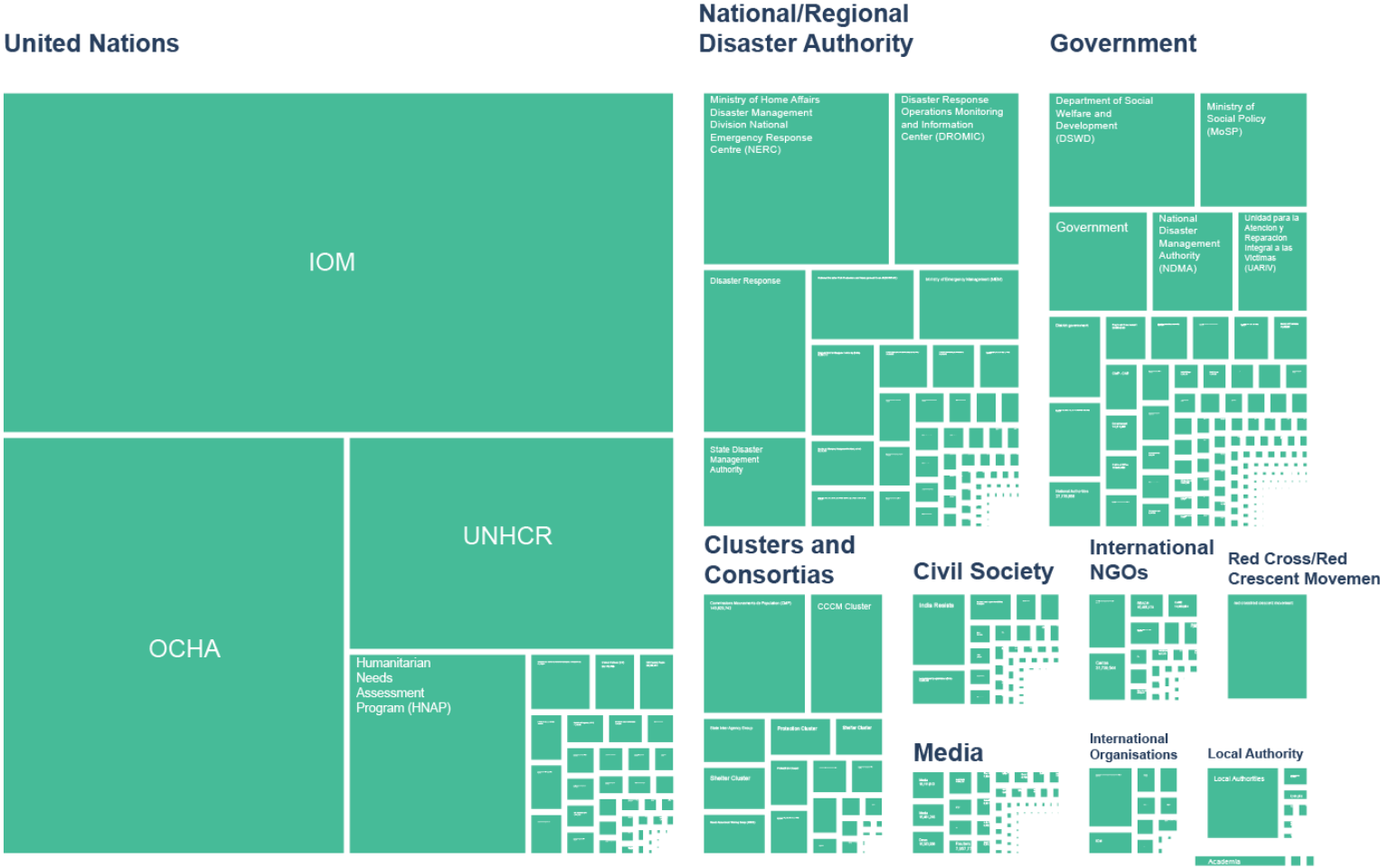


252 Countries and territories monitored

3,461 Publishers or sources reviewed

Sources of our data

IDMC gathers data from a wide range of global publishers and sources, with over **70%** of the data coming from unstructured files, such as PDF reports.



Our two metrics

Internal displacements – “flows”

An “internal displacement” refers to each new forced movement of person within the borders of their country recorded during the year.



Total number of IDPs - “stocks”

The “total number of IDPs” is a snapshot of all the people living in internal displacement at the end of the year.

Year

1st January

31st December

Global Internal Displacement Database (GIDD)

IDMC Data Portal Reset Query

Explore the Global Internal Displacement Database (GIDD), a global repository of internal displacement data since 2008.

Downloadable data files include metadata, copyright details, and methodological notes.

Download dataset

Internal Displacements or Internally displaced people (IDPs)

Conflict and Violence or Disasters

Disasters

Countries, and/or Territories
**In compared view, up to 3 countries or territories can be selected*

Timescale 2023 - 2023

Additional Disaster Filters

Disaster Hazard Type

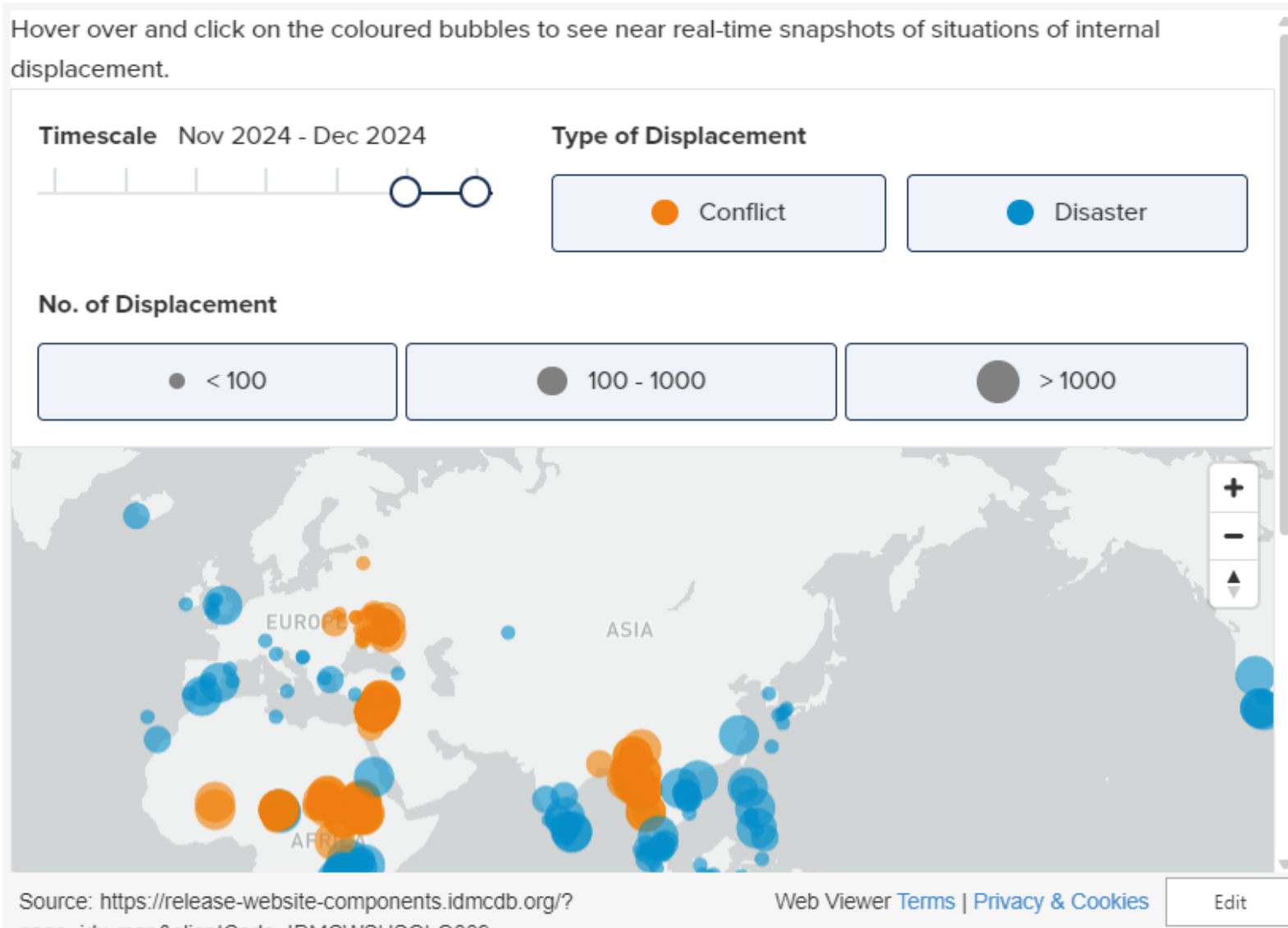
Internal Displacements ⓘ

Internally displaced people (IDPs) ⓘ

Source: <https://release-website-components.idmcd.org/?page=gidd&clientCode=IDMCWSE01000> Web Viewer [Terms](#) | [Privacy & Cookies](#) Edit

- Annual country level data
- 17 years of consistent reporting (2008-2024)
- Updated once a year

The Internal Displacement Updates (IDU)



- **Timely disaggregated data**
- Available since **2018**
- **98%** of the data is at admin1 (state/ region/ province) level or lower
- **Preliminary provisional flow data**
- Updated every 2 hours

Country profiles

Country Profile

Philippines

2008 - 2023

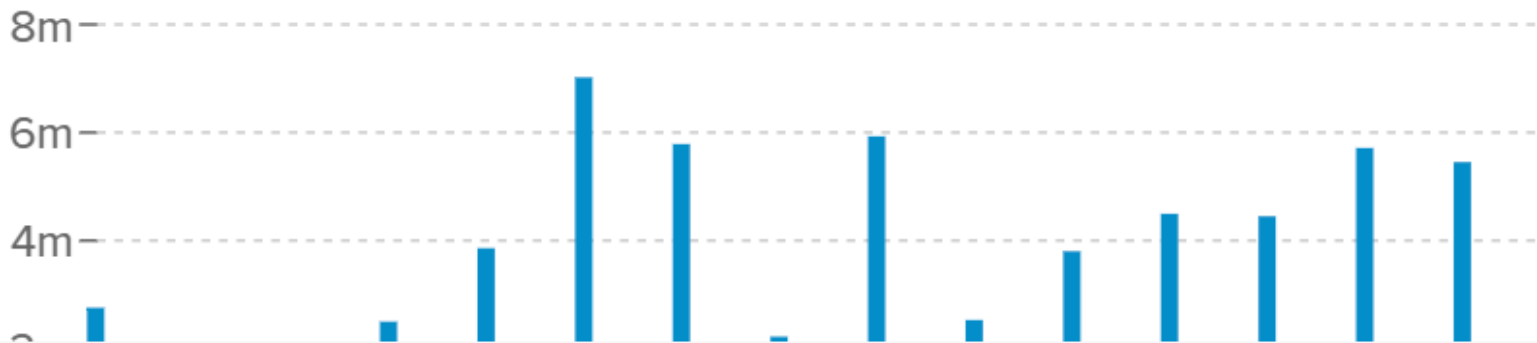


62.2m

Internal Displacements  (2008 - 2023)

634

Disaster Events Reported



Research gaps

- **What are the socio-economic impacts of internal displacement?**
- **How severe are the needs and vulnerability of IDPs vs non-IDPs?**
- **What are the demographic characteristics of those forced to move?**
- **What is the duration of disaster displacement?**
- **How does climate change impact disaster displacements?**
- **What is the risk of being displaced in the future?**
- **How do slow-onset events (such as droughts) impact displacement?**
- **What is the relationship between food security and internal displacement?**
- **How can we assess when IDPs have reached a durable solution (returns, resettlements or local integration)?**

Thank you!

For questions/ comments, you can contact me at:

fanny.teppe@idmc.ch

To access our data through APIs, please scan this code:



Scan me





Every day, people flee conflict and disasters and become displaced inside their own countries. IDMC provides data and analysis and supports partners to identify and implement solutions to internal displacement.

Join us as we work to make real and lasting change for internally displaced people in the decade ahead.