



University
of Glasgow

School of Medicine,
Dentistry & Nursing

Bachelor of Dental Surgery Open Day Sept 2024

Admissions Team:

- Prof Christine Goodall, Head of BDS Admissions
- Mr Craig Mather, Deputy Head of BDS Admissions
- Mrs Leigh-Ann Dragsnes, Learning & Teaching Manager
- Mrs Susan Johnston, Admissions Administrator



University
of Glasgow

RANKED IN THE
TOP 1%
OF THE
WORLD

A MEMBER OF THE
RUSSELL GROUP
OF RESEARCH-
INTENSIVE UK
UNIVERSITIES

THE OPPORTUNITY
TO LEARN FROM
**PIONEERING
ACADEMICS**
WHOSE RESEARCH IS
INTERNATIONALLY
RECOGNISED

THE FOURTH
OLDEST
ENGLISH-SPEAKING
UNIVERSITY
IN THE WORLD

FOUNDING
MEMBER OF THE
INTERNATIONAL
**RESEARCH
UNIVERSITIES
NETWORK**

SCOTLAND'S
LARGEST CITY

RENOWNED
MUSIC SCENE
AND A WEALTH
OF ARTS AND
**CULTURAL
VENUES**

UNESCO CITY
OF MUSIC



Why Dentistry?

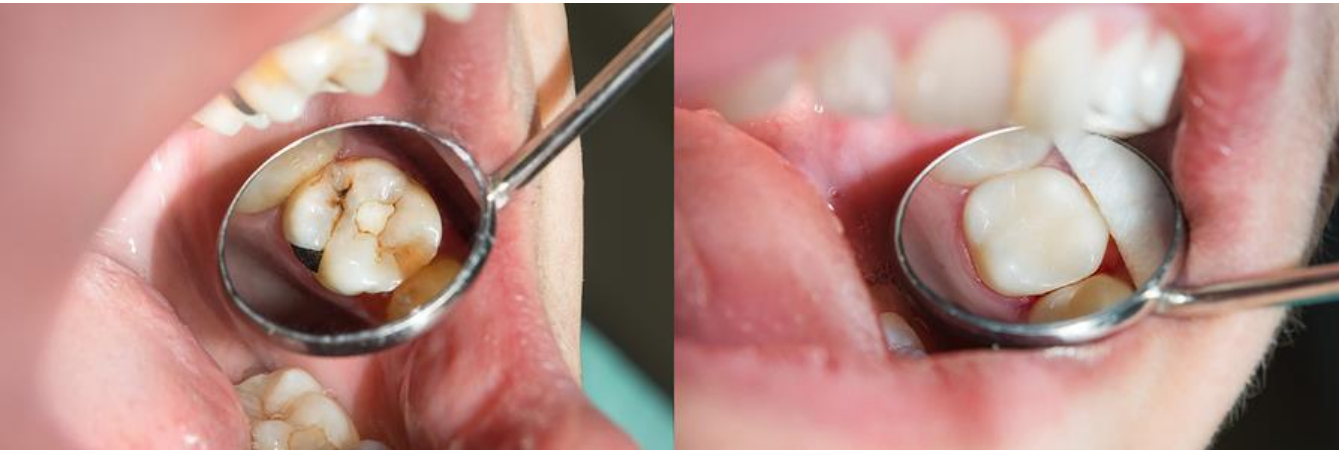
- Health Care Profession
 - Academic
 - Practical
 - Vocational Course
 - Varied Career Options
 - Rewarding and Fulfilling Career
-
- NOT Beauty Therapy!





Dental Treatments

- Restoring damaged teeth





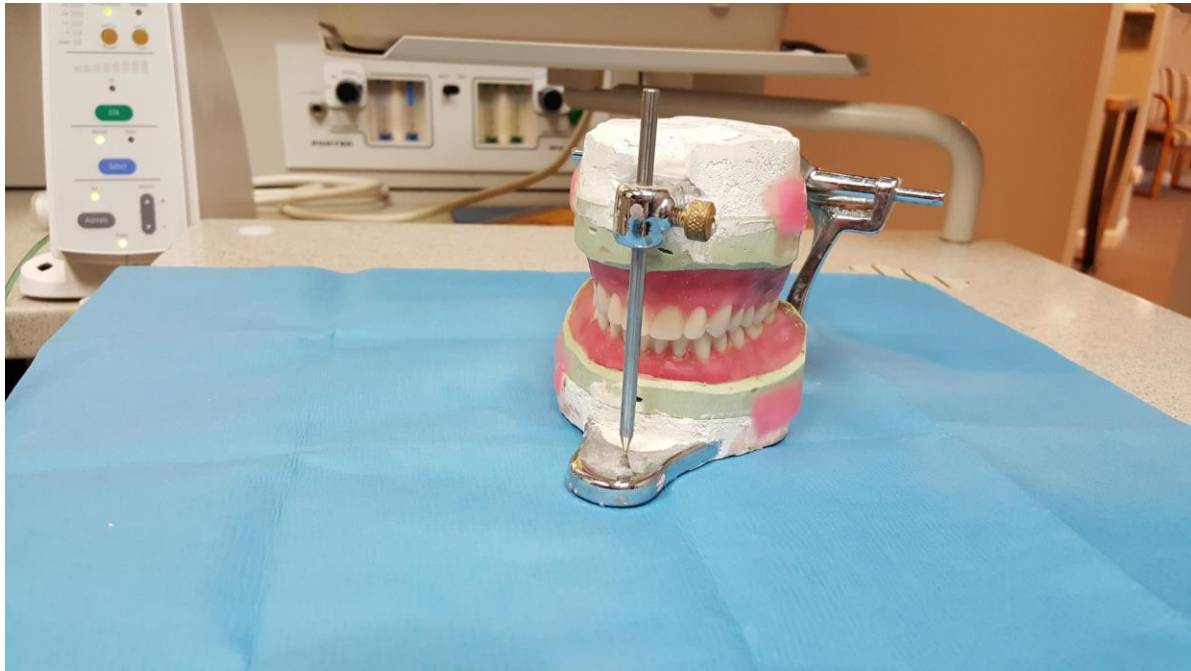
Dental Treatments

- Restoring damaged teeth
- Gum disease



Dental Treatments

- Restoring damaged teeth
- Gum disease
- Orthodontic treatment



Dental Treatments

- Restoring damaged teeth
- Gum disease
- Orthodontic treatment
- Dentures



Dental Treatments

- Restoring damaged teeth
- Gum disease
- Orthodontic treatment
- Dentures
- Soft tissue disease



Dental Treatments

- Restoring damaged teeth
- Gum disease
- Orthodontic treatment
- Dentures
- Soft tissue disease
- Surgery



Dental Treatments

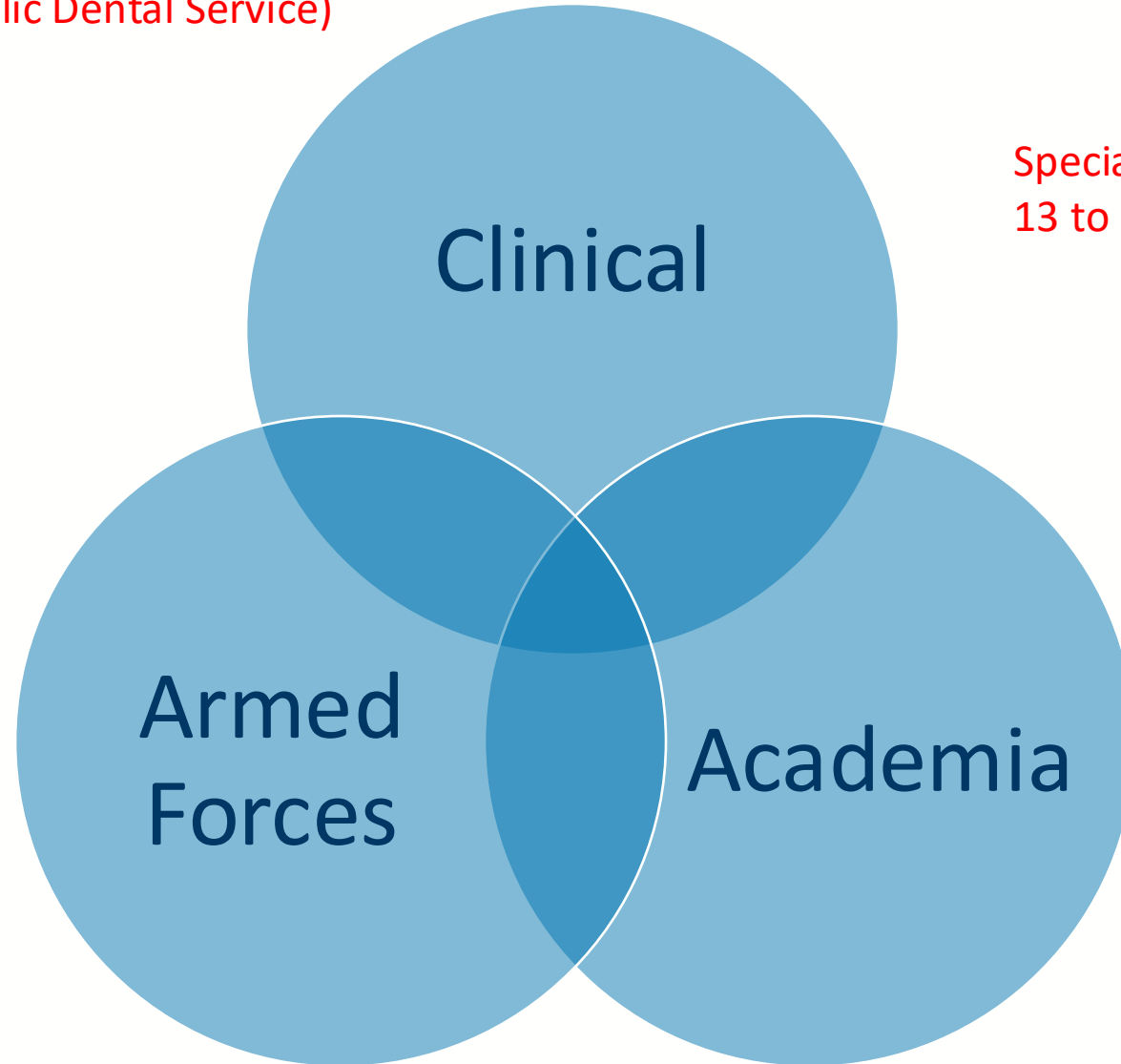
- Restoring damaged teeth
- Gum disease
- Orthodontic treatment
- Dentures
- Soft tissue disease
- Surgery
- Prevention



Career Options

Navy
Army
Air Force

Hospital Dentist
Community Dentist
(Public Dental Service)
High Street Dentist



Specialisation –
13 to choose from!

Research
Teaching



University of Glasgow

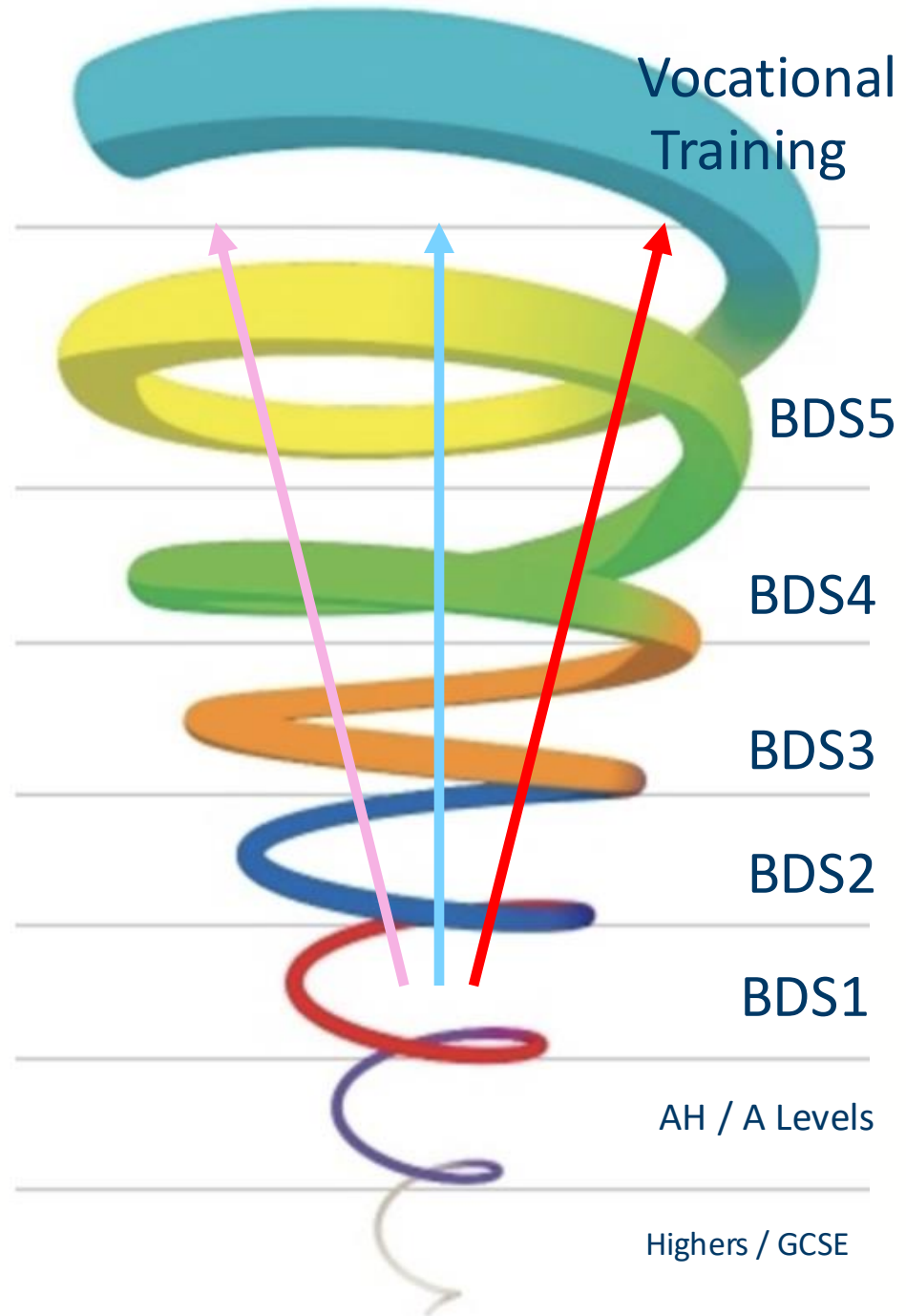
The Curriculum

3 Themes:

Biomedical and Applied Medical Science

Clinical Dental Science

Patient Management / Health Promotion



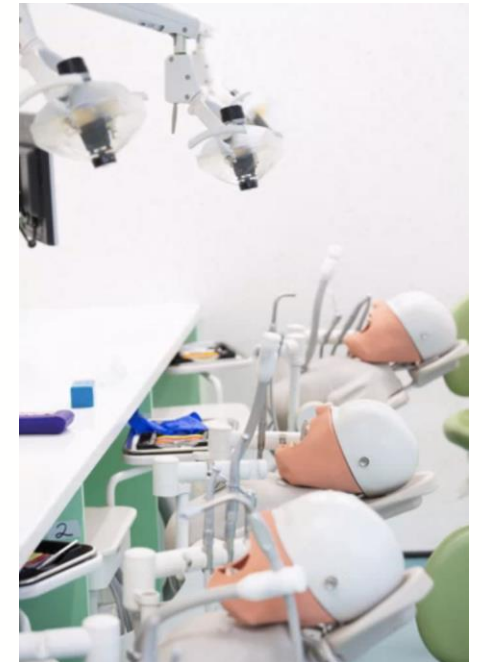


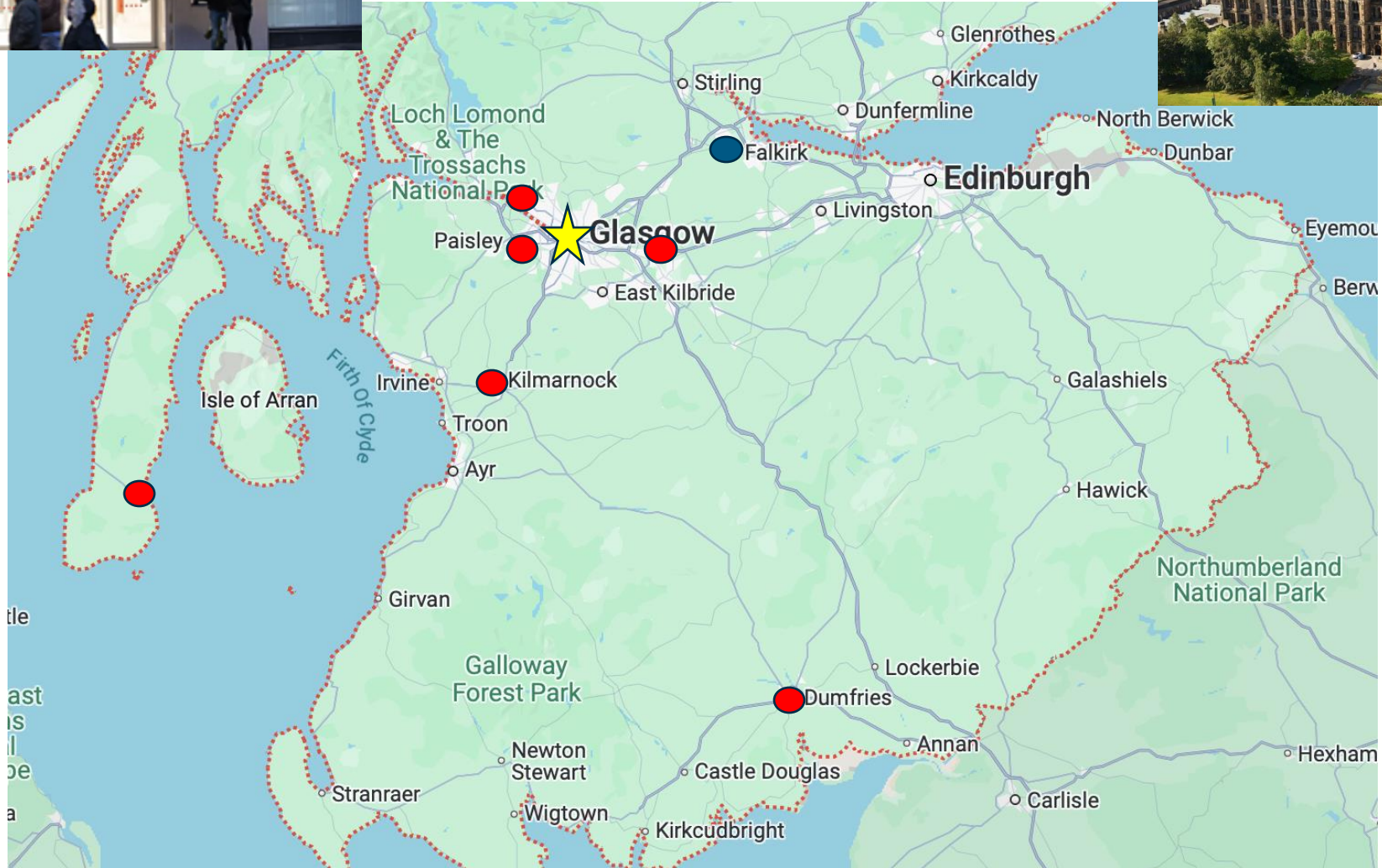
The Curriculum

- Variety of Teaching Methodologies
- Student centered learning
- MOODLE



- Self reflection
- Professionalism
- Formal Assessments







University
of Glasgow

School of Medicine,
Dentistry & Nursing

Outreach Centres

Dumfries

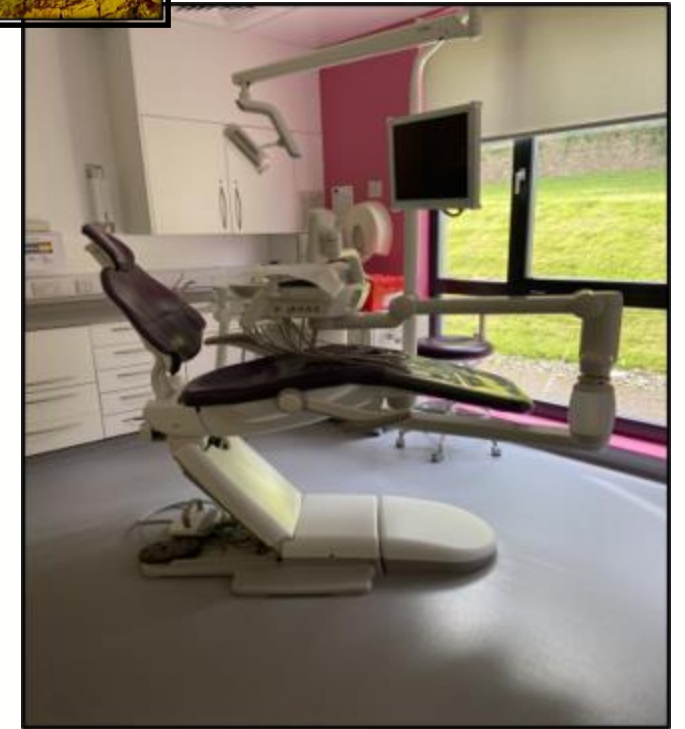
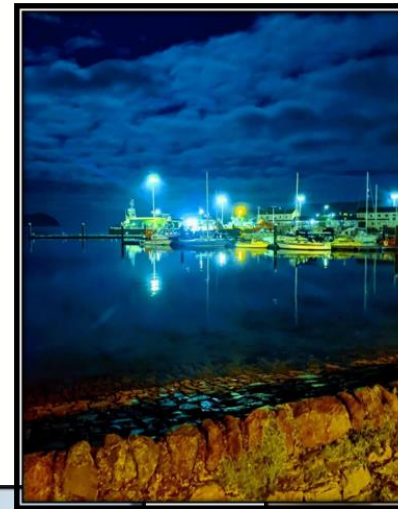
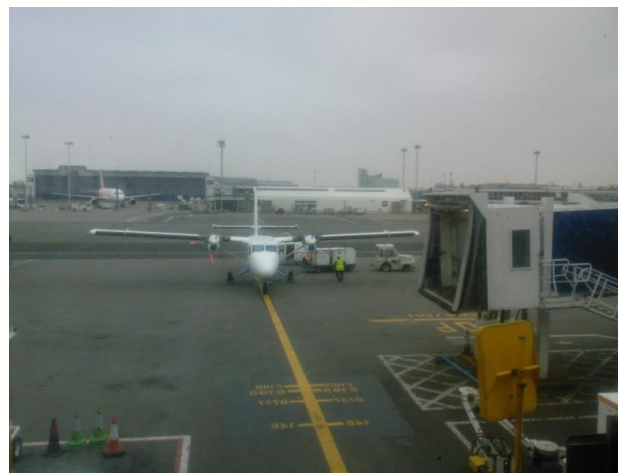




University
of Glasgow

School of Medicine,
Dentistry & Nursing

- Campbelltown





Kilmarnock



Coatbridge



Paisley



Vale of Leven



University
of Glasgow

School of Medicine,
Dentistry & Nursing

Application

- Entry is ALWAYS through UCAS, closing date 15th October the year prior to entry
- G28 for University of Glasgow
- A200 for Dentistry





Entry requirements / Academic Qualifications

Academic Qualifications

UCAT taken in year of application

Highers/Advanced Highers

AAAAB Higher + BB Advanced Higher (AAAAB S5 minimum for consideration) Additional requirements:

- Higher Biology **AND** Chemistry at grade A.
- Higher Maths or Physics
- National 5 English at grade B.

S6

3 subjects should be studied and **MUST** include:

- Advanced Higher Biology and Chemistry.



University
of Glasgow

School of Medicine,
Dentistry & Nursing

Academic Qualifications

- A Levels
- AAA to include Biology, Chemistry and 1 other subject
- AND
- 6 GCSEs at grade A/7-9 MUST include Maths and/or Physics plus English Language or Literature





University
of Glasgow

School of Medicine,
Dentistry & Nursing

Academic Requirements Alternative Routes

- Degree – 2.1 Honours in a relevant subject.
- Approved Access to Medicine courses for mature applicants

<https://www.gla.ac.uk/schools/medicine/dental/undergraduate/academicentryrequirements/#matureapplicants>



University
of Glasgow

School of Medicine,
Dentistry & Nursing

Work Shadowing

We recognise that obtaining work shadowing in a dental setting is becoming increasingly difficult, however, applicants may still be able to secure alternative forms of shadowing or voluntary work which involves caring for and interacting with different people or develops the skills you will need as a dental professional.

For more information on alternatives see
[https:// www.gla.ac.uk/schools/dental/undergraduate/workshadowing/](https://www.gla.ac.uk/schools/dental/undergraduate/workshadowing/)





University
of Glasgow

School of Medicine,
Dentistry & Nursing

UCAT

- University Clinical Aptitude Test (UCAT) is an admissions test used by a number of Universities for their medical and dental degree programmes.
- The range of scores we consider changes each year as the performance of each admissions cohort varies.
- Fee associated with UCAT test – eligible applicants can apply for a bursary to cover the cost of the test.



University
of Glasgow

School of Medicine,
Dentistry & Nursing

UCAT

- The UCAT forms an extremely important part of the BDS entry requirements and if your score is deemed to be too low then you will not be selected for interview, regardless of your qualifications.
- More information about the UCAT test and previous cut off scores can be found on our website
https://www.gla.ac.uk/media/Media_882467_smxx.pdf



University
of Glasgow

School of Medicine,
Dentistry & Nursing

Selection Procedure

1. Applications are screened in line with our published entry requirements:

- <https://www.gla.ac.uk/schools/medicine/dental/undergraduate/academicentryrequirements/>
- https://www.gla.ac.uk/media/Media_971074_smxx.pdf
- If you do not, or cannot, meet the criteria in our person specification, your application will not be given further consideration



University
of Glasgow

School of Medicine,
Dentistry & Nursing

Selection Procedure

2. For candidates who meet the published criteria, the UCAT score is used to select the required number of applicants for interview. The cut off for the UCAT score is determined on an annual basis to allow us to take forward the required number of applicants to the interview stage.
 - We do not release the cut off score in the year of application.
 - If you are not asked to attend interview, it is because your UCAT score was below the cut off.





Selection Procedure/Interviews

3. Interviews – interviews usually held in January/February.

- On an annual basis, we agree on the number of offers to be issued in order to meet the intake targets set by the Scottish Government and the Scottish Funding Council.
- If you do not receive an offer following interview, it is because your overall interview score was below the cut-off for receipt of an offer.
- Interviews for 2025 entry will be traditional panel style.





University
of Glasgow

School of Medicine,
Dentistry & Nursing

Key Dates

- Application Deadline – 15th October 2024
- Interview Invitations – December 2024
- Interviews – Late January/ Early February 2025
- Decisions – March 2025

Our full Admissions procedures can be found at
https://www.gla.ac.uk/media/Media_837954_smxx.pdf

- <https://www.gla.ac.uk/schools/medicine/dental/undergraduate/>
- <http://www.ucas.com>
- <http://www.ucat.ac.uk>
- Our dental school MOOC
- <https://www.futurelearn.com/courses/be-a-dentist>



Further Information

- Susan Johnston, Admissions Administrator
- Email med-sch-dental-ug@glasgow.ac.uk





University
of Glasgow

School
of Dentistry



University
of Glasgow | Dental
School



My Experience of Dental School

- Katie Glass BDS5



University
of Glasgow

School of Medicine,
Dentistry & Nursing

BDS1

- **Lots of general science**
 - Can be overwhelming but is very important for the future
- **Anatomy of the whole body**
 - Pro-section anatomy lab classes
- **Tooth morphology and oral biology**
- **Mentor groups**
 - Help with settling in
 - Good support system in the dental school with mentors and advisors





BDS2

- **Operative techniques!**
 - You will improve so much over the year!
 - Be able to reflect on your work
- **More oral biology**
 - Enamel, dentine, cementum, chewing and swallowing
- **Diseases of Human Systems**
 - Important to understand your patient as a whole!
- **Communication workshops**





University
of Glasgow

School of Medicine,
Dentistry & Nursing

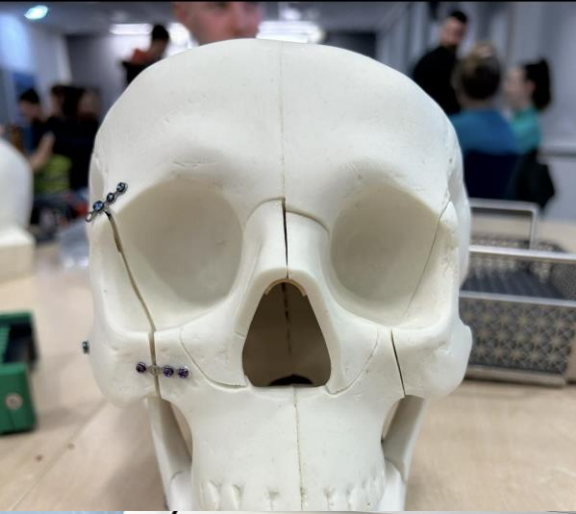
BDS3

- **Patients!**
 - Denture clinic
 - Restorative clinic
 - Oral surgery – extraction
 - Paediatrics
- **Anatomy!**
 - Dissection of the head and neck
 - Quite demanding but an incredible and invaluable experience
- **Halfway Ball**



BDS4

- **More clinics!**
 - Restorative, paediatrics, denture clinic all continue
 - Oral surgery – extraction/minor oral surgery/consultant clinic
 - Orthodontics
 - Oral medicine
 - Periodontics
- **New Topics**
 - Oral Medicine
 - Maxillofacial Surgery
 - Implants
- **Final Exams (Written) !!!!**





BDS5

- **Outreach clinics**
 - Vale of Leven and Campbeltown!
 - Forth Valley for maxfacs
- **In House Clinics**
 - Restorative
 - Endodontics
 - Periodontics
 - Oral surgery
 - Paediatrics
- No more lectures!!
- Final Exams (OSCE)





University
of Glasgow

School of Medicine,
Dentistry & Nursing

Organisations to Get Involved In



- GDSS (Glasgow Dental Student Society)
- GOHISS (Glasgow Oral Health Improvement Student Society)
- Teddy Bear Hospital Glasgow

- Always lots of projects and opportunities going on
 - Class reps
 - Mentor in BDS4





University
of Glasgow

School of Medicine,
Dentistry & Nursing



GDSS – Glasgow Dental Student Society

- Socials every month
- Run club every week
- Annual Ball
- Pantomime
- Friends across all year





University
of Glasgow

School of Medicine,
Dentistry & Nursing

GOHISS – Glasgow Oral Health Improvement Student Society

- Volunteer at food banks in Glasgow
 - Generic dental advice
 - Hand out free toothpaste and toothbrushes
- Promote dental hospital and outreach centres
- School visits – oral hygiene and dental trauma
- Mouth cancer awareness
- Freshers fayre





University
of Glasgow

School of Medicine,
Dentistry & Nursing

My Highlights

- Very hands on with patients from end of 2nd year onwards
- Outreach clinics (paediatrics and adult)
- Realising the opportunities that dentistry gives you
- Discovering what aspects of dentistry you enjoy by trying every speciality
- Friendly and supportive clinicians
- The dental school is like a family
- I have found friends for life
- The social aspect

