



University  
of Glasgow

# HEHTA Newsletter

School of Health  
& Wellbeing

Autumn 2024

 [x.com/UofGHEHTA](https://x.com/UofGHEHTA)

## Harvard's Prof. Stéphane Verguet visits HEHTA

HEHTA welcomed Harvard professor Stéphane Verguet to the University of Glasgow on a knowledge sharing visit in June.

Stéphane Verguet is an Associate Professor of Global Health in the Department of Global Health and Population and a faculty member of the Center for Health Decision Science (CHDS) at the Harvard T.H. Chan School of Public Health.

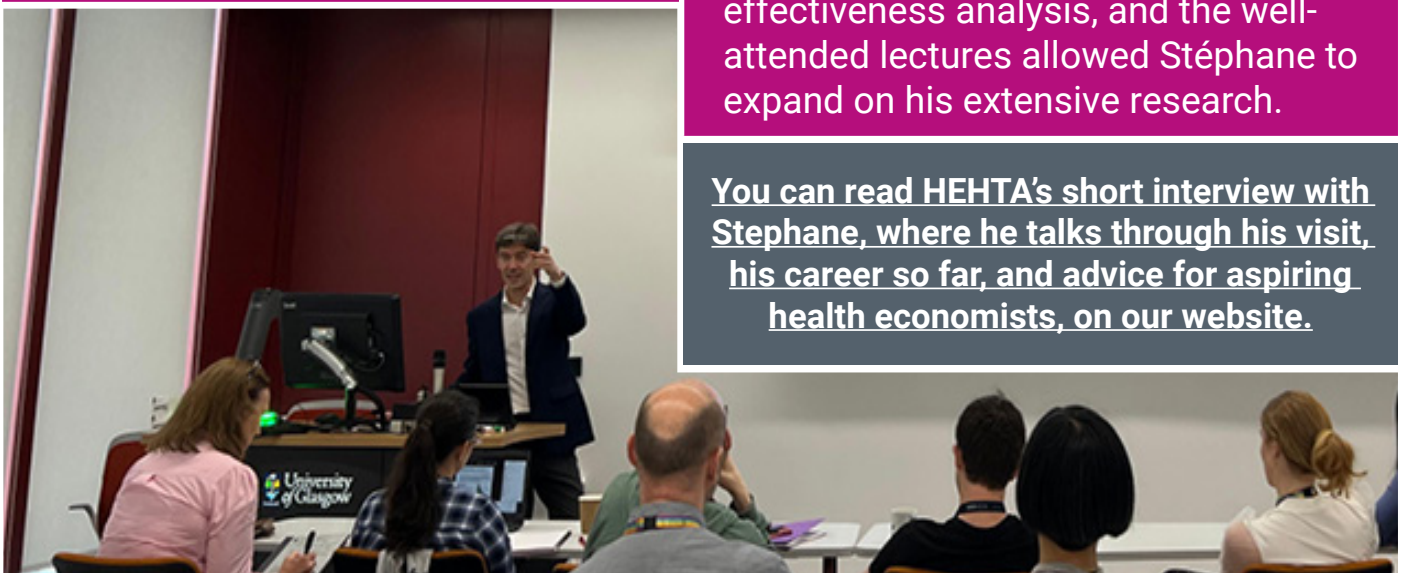
CHDS, like HEHTA, aim to promote more informed and systematic decision making in the use of health-related technologies and public health.



HEHTA invited Stéphane to join the team at a number of internal workshops and to deliver lectures for the Maurice Bloch and GhESS Seminar series.

The workshops encouraged insightful discussion on equity-informative evaluation and extended cost-effectiveness analysis, and the well-attended lectures allowed Stéphane to expand on his extensive research.

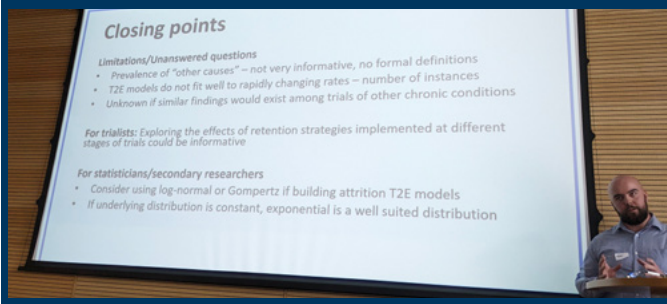
[You can read HEHTA's short interview with Stephane, where he talks through his visit, his career so far, and advice for aspiring health economists, on our website.](#)



Contact us at [shw-hehta@glasgow.ac.uk](mailto:shw-hehta@glasgow.ac.uk) for more information and to join our mailing list.

## 2nd Place at Early Career Researchers using Statistics Symposium 2024

PhD Student Ryan McChrystal achieved second place at the Early Career Researchers using Statistics Symposium 2024.



The symposium, organised by the Health Sciences Research Unit at University of Aberdeen, saw a variety of PhD students, early career researchers, and professors all presenting on their ongoing work.

Ryan's presentation explored his individual participant data (IPD) analysis project where, as part of his PhD, he is looking at how rates of attrition (patients dropping out of randomised trials) occur over time in trials for different conditions, such as patients with type 2 diabetes and COPD.



## HEHTA's Global Presence at 2024 Summer Conferences

HEHTA's long-standing presence at global events continued this summer at a variety of international conferences in Health Economics and Health Technology Assessment.

From symposium panels to abstract presentations, colleagues represented the team at several leading events, including HTAi in Seville, EuHEA in Vienna, and ISD in Bergen.



## Viva Success for Francesco

Research Associate Francesco Manca successfully defended his PhD at his viva in July. As an already accomplished researcher within the HEHTA team, Francesco is pursuing his PhD by published work, meaning a retrospective submission of works already undertaken. His existing body of research, which includes publications in leading journals and presentations at international conferences, focuses on alcohol use disorder epidemiology and the evaluation of public health interventions to reduce alcohol-related harm in Scotland- such as minimum unit pricing (MUP).



## Team Promotions 2024

HEHTA celebrated a series of well-deserved team promotions following the University of Glasgow's Academic Promotion and Zone Movement Round 2024.

The university's promotion and zone movement round is an annual process, designed to recognise and reward excellent performance that supports the delivery of university objectives.

Following their respective applications:

- Robert Heggie, Martin Taylor-Rowan, and Katherine Simpson were promoted to Research Fellow
- Nurnabi Sheikh was promoted to Research Associate
- Evi Germeni was promoted to Reader.



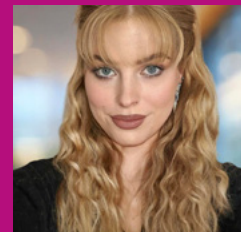
## Arrivals

**Stephen Knight**  
Clinical Lecturer



Stephen begun his NES/CSO Postdoctoral Clinical Lecturer post with HEHTA in August, where he is looking to better understand postoperative trajectories in patients receiving renal transplants using nationally-linked data. He is also interested in novel technologies which can help to improve care for patients undergoing surgery.

**Martyna Chabalowska**  
Trainee Health Economist



Martyna joined the team in August, arriving with a life science background and an MSc in Precision Medicine. She is hoping to get involved in translational research informing the formulation of health policy.

## Departures

**Hanin Kamaruzaman and Fabiola Lemus Villafuerte**  
HEHTA PhD Students

HEHTA PhD students Hanin and Fabiola, who are due to finalise their theses towards the end of the year, have returned to Mexico and Malaysia respectively. The HEHTA team hope to enjoy a celebratory rendezvous in Glasgow with Hanin and Fabiola at a 2025 graduation.

**Price Udo Price**  
Visiting PhD Student

Price Udo Price has returned to Brazil to complete his PhD at the University of São Paulo. Price, who is due to submit his thesis in December, spent six months with HEHTA and the University of Glasgow conducting a cost-utility analysis on Alzheimer's disease as part of his studies. HEHTA would like to wish Price all the best in the final stages of his PhD, and in all his future endeavours.



## HEHTA's Newest Doctors Graduate

Celebrations were underway in June as HEHTA's newest doctors were graduated. Lili Wei, Ryan Field, and Lisong Zhang all had their doctoral degrees formalised as part of University of Glasgow's summer graduation ceremonies.



## Further your Career with Our Short Courses Fully Online Distance Learning - Learn Anywhere, Any Time.

### Semester 1: September-December 2024

#### Decision Analytic Modelling & Early Health Technology Assessment

- Design and build decision trees and Markov models including probabilistic sensitivity analysis and value of information analysis.
- Critically compare how early HTA differs from HTA undertaken later in a technology lifecycle.
- Critically evaluate the quality of early economic evaluations.

#### HTA: Policy & Principles

- Gain a critical awareness of the broader policy context into which Health Technology Assessment (HTA) is located.
- Gain a critical understanding of the theoretical underpinnings, principles, and techniques of HTA.

#### Maximising the Value of Clinical Trial Data: Advanced Analysis for Economic Evaluation & Modelling

9 comprehensive sessions held over three weeks, using a combination of live lectures and hands-on tutorials to cover:

- Regression analysis to estimate costs and utilities based on trial data.
- Survival analysis techniques.
- Treatment switching techniques.



**Secure your Place Now:**  
[Visit our Short Courses Website.](#)

## Publications

Alonso S, Arinaitwe M, Atuhaire A, Nankasi AB, Prada JM et al (**McIntosh E**). The short-term impact of *Schistosoma mansoni* infection on health-related quality of life: implications for current elimination policies. *Proceedings B*. 2024 Jun 12;291(2024):20240449.

Blair S, Henderson M, McConnachie A, **McIntosh E**, Smillie S et al. The Social and Emotional Education and Development intervention to address wellbeing in primary school age children: the SEED cluster RCT. *Public health research (Southampton, England)*. 2024;12(6):1-73.

Cherney D, Folkerts K, Mernagh P, Nikodem M, Pawlitschko J et al (inc. **Hawkins N**). Comparative Efficacy of Finerenone versus Canagliflozin in Patients with Chronic Kidney Disease and Type 2 Diabetes: A Matching-Adjusted Indirect Comparison. *Journal of Market Access & Health Policy*. 2024 Jul 25;12(3):169-80.

Chikumbu E, Katiti V, Bunn C, Msoka EF, Sichali J et al (inc. **McIntosh E**). A more equitable approach to economic evaluation: Directly developing conceptual capability wellbeing attributes for Tanzania and Malawi. *Social Science & Medicine*. 2024 Aug 1;355:117135.

Dagnan D, Thompson P, Hastings R, Hatton C, Melville C, et al (inc. **Mcmeekin N**). The influence of therapy quality on outcomes from behavioural activation and guided self-help treatments for depression in adults with intellectual disabilities. *British Journal of Clinical Psychology*. 2024 Aug 26.

Fenny AP, Otieku E, **Owusu Achiaw S**, Okoe Boye B, Asenso-Boadi F et al. Impact of COVID-19 on the management of hypertension: a perspective on disease severity, service use patterns and expenditures from Ghana's health insurance claims data. *Journal of Human Hypertension*. 2024 Jun 20:1-9.

Friday JM, Cleland JG, Pellicori P, Wolters M, McMurray JJ (inc. **McAllister DA** and **Lewsey J**). Loop diuretic utilisation with or without heart failure: impact on prognosis. *European Heart Journal*. 2024 Jun 7:ehae345.

Gajwani R, Sim F, McAllister K, Smith H, **McIntosh E** et al. The BRIDGE project: A feasibility randomised controlled trial of brief, intensive assessment and integrated formulation for young people (age 14-24) with features of borderline personality disorder (Protocol). *Frontiers in Psychiatry*. 2024 Aug 23;15:1389578.

Hanlon P, Politis M, Wightman H, Kirkpatrick S, Jones C et al (inc. **Wei L**). Frailty and socioeconomic position: A systematic review of observational studies. *Ageing Research Reviews*. 2024 Jul 16:102420.

Igelström E, Kopasker D, Craig P, **Lewsey J**, Katikireddi SV. Estimating the causal effects of income on health: how researchers' definitions of "income" matter. *BMC public health*. 2024 Jun;24(1):1-1.

Kent J, Nordgren R, Ahn D, Lysandrou M, Diaz A, et al (inc. **McMeekin N**). Cost effectiveness of commercial portable ex vivo lung perfusion at a low-volume US lung transplant center. *Artificial Organs*. 2024 Jun 24.



Krauth SJ, Steell L, Ahmed S, **McIntosh E**, Dibben GO et al (inc. Lewsey J and **McAllister DA**). Association of latent class analysis-derived multimorbidity clusters with adverse health outcomes in patients with multiple long-term conditions: comparative results across three UK cohorts. *EClinicalMedicine*. 2024 Aug 1;74.

Kyando HA, **Tesha N**, Metta E. Predictors of mothers living with HIV uptake of HIV early infant diagnosis services in Iringa District, Tanzania. *Journal of the International Association of Providers of AIDS Care*. 2024 Jun 28.

**Manca F, Ciminata G, Grieve E**, Reboud J, Cooper J et al (inc. **McIntosh E**). Cost-effectiveness of sentinel screening of endemic diseases alongside malaria diagnosis: A case study in schistosomiasis. *PLOS Neglected Tropical Diseases*. 2024 Jul 29;18(7):e0012339.

**Manca F, Zhang L**, Fitzgerald N, Ho F, Innes H et al (inc. **Lewsey J**). Pharmacological treatments for alcohol dependence: Evidence on uptake, inequalities and comparative effectiveness from a UK population-based cohort. *Drug and Alcohol Review*. 2024 Apr 23.

**Mulholland RJ, Ciminata G**, Quinn TJ, Pollock KG, Lister S et al (inc. **Geue C**). Delay and pay? Healthcare costs associated with late oral anti-coagulant prescribing in people with atrial fibrillation. *Pharmacoeconomics*. 2024 Aug 2:1-3.

Robles-Zurita JA, **McMeekin N**, Sullivan F, Mair FS, Briggs A. Health economic evaluation of lung cancer screening using a diagnostic blood test: the Early detection of Cancer of the Lung Scotland (ECLS). *Current Oncology*. 2024 Jun;31(6):3546-62.

Sanya RE, Karugu CH, Binyaruka P, Mohamed SF, Kisia L et al (**Deidda M**). Impact of the COVID-19 pandemic on type 2 diabetes care and factors associated with care disruption in Kenya and Tanzania. *Global Health Action*. 2024 Dec 31;17(1):2345970.

**Wei L**, Butterly E, Pérez JR, Chowdhury A, Shemilt R et al (inc. **McAllister DA**). Description of subgroup reporting in clinical trials of chronic diseases: a meta-epidemiological study. *BMJ Open*. 2024 Jun 1;14(6):e081315.

